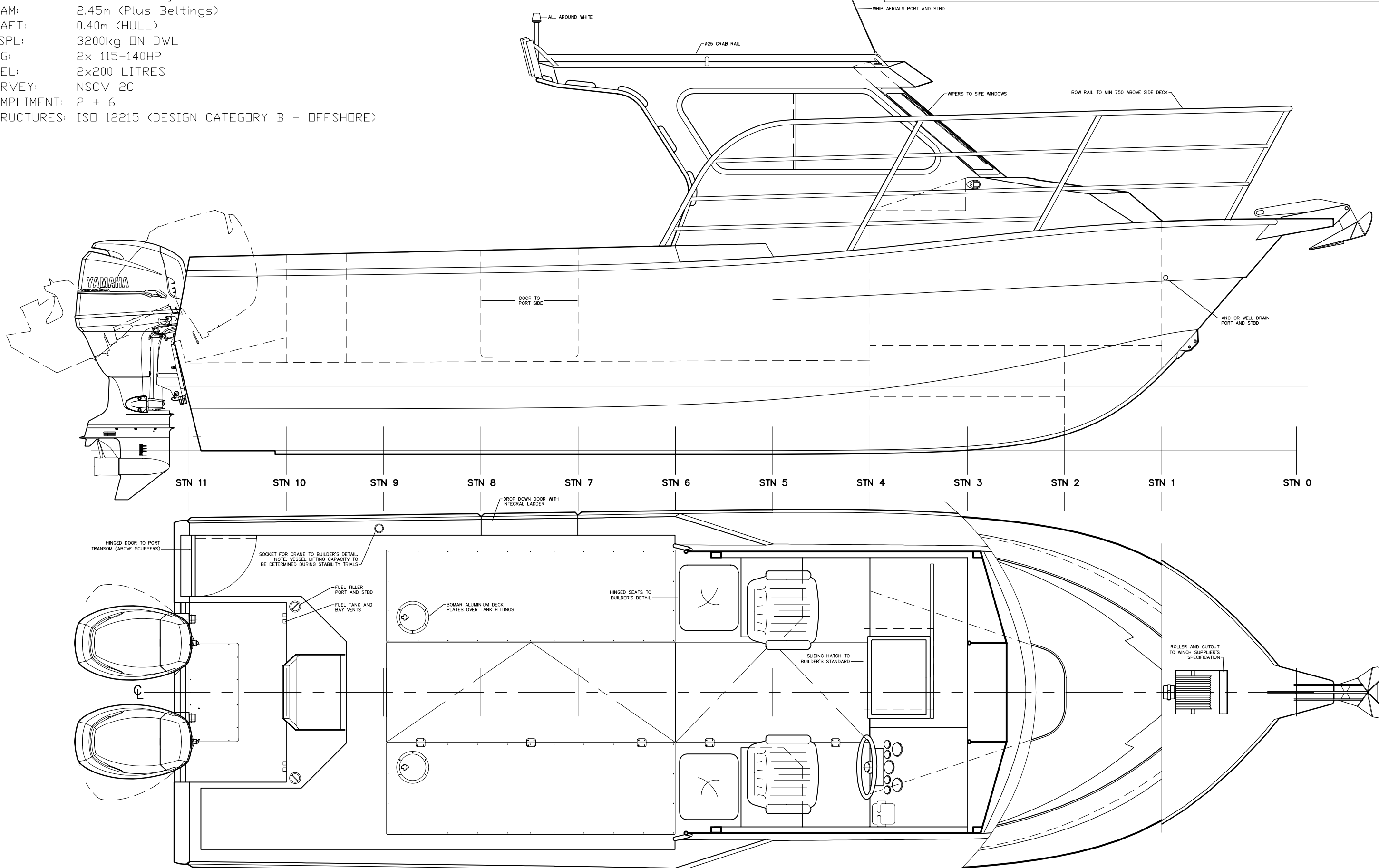


# PRINCIPAL PARTICULARS

LDA: 7.75m  
 LDH: 7.5m (Hull Only)  
 BEAM: 2.45m (Plus Beltings)  
 DRAFT: 0.40m (HULL)  
 DISPL: 3200kg ON DWL  
 ENG: 2x 115-140HP  
 FUEL: 2x200 LITRES  
 SURVEY: NSCV 2C  
 COMPLIMENT: 2 + 6  
 STRUCTURES: ISO 12215 (DESIGN CATEGORY B - OFFSHORE)

## DAMAGE STABILITY NOTES

1. BUILDER TO FIT 2 OF 4.0KL/H MANUAL BILGE PUMPS
2. BUILDER TO FIT SUFFICIENT FOAM TO COMPLY WITH BASIC FLOATATION STANDARDS. VOLUME TO BE CONFIRMED AFTER WEIGHING COMPLETED VESSEL



## FUEL SYSTEM NOTES.

1. FUEL FILLER AND VENT PIPES TO RISE CONTINUOUSLY BETWEEN TANK TOP AND FILLER/VENT
2. TOTAL FLEXIBLE HOSE LENGTH FOR VENT AND FILLER TO BE LESS THAN 760mm EACH
3. TANK AND HULL STRUCTURE TO BE ISOLATED FROM ST. STEEL BOLTS WITH NYLON SLEAVES AND WASHERS.
4. FLEXIBLE HOSES TO BE FASTENED WITH TWO (2) CORROSION RESISTANT CLIPS AT EACH END
5. POLYETHYLENE FUEL TANKS EXPAND 3% WITHIN A MONTH AFTER BEING FILLED WITH FUEL, RE-ADJUST FIXINGS AFTER OPERATION
6. COFFER DAM TO BE DRAINED THROUGH TRANSOM AND VENTED TO TRANSOM WITH FUEL VENT
7. WHERE PLASTIC TANKS ARE USED THEY MUST COMPLY WITH ISO21487:2006
8. VESSEL TO BE FITTED WITH 2 OF SANT MARINE 11-545 (200L) TANKS
9. TANKS TO BE FACTORY MARKED WITH A CLEAR SERIAL NUMBER TO ALLOW BATCH TRACING
10. SHUT OFF COCK TO BE FITTED IMMEDIATELY AFTER SUPPLY EXIT FROM TANK.
11. FLEXIBLE FUEL SUPPLY HOSE TO BE ST. STEEL REINFORCED

CHRIS TUCKER MARINE DESIGN PTY LTD.  
 PO BOX 194, OLINDA, VICTORIA, 3788, AUSTRALIA  
 PHONE +61 (0)3 9728 1754, INFO@CTMD.COM.AU

**7.5m DIVE BOAT**

**GENERAL ARRANGEMENT**

BY DATE SCALE DRWG  
 CT SEP 11 1:12 @ A1 104/4

THIS DRAWING MAY NOT BE COPIED, COMMUNICATED TO ANY PERSON OR USED FOR MANUFACTURE WITHOUT THE EXPRESS WRITTEN CONSENT OF THE DESIGNER.