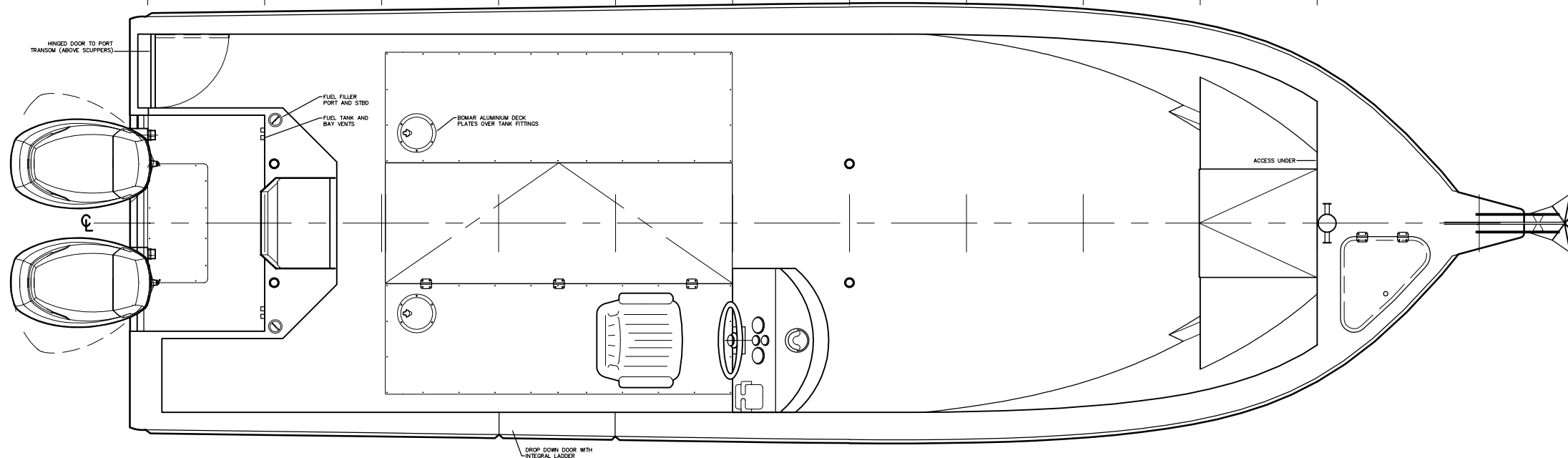
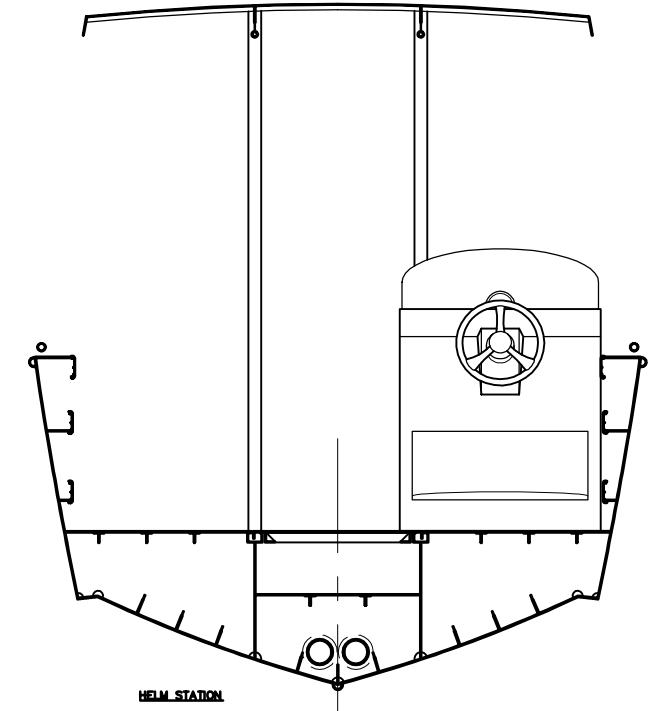
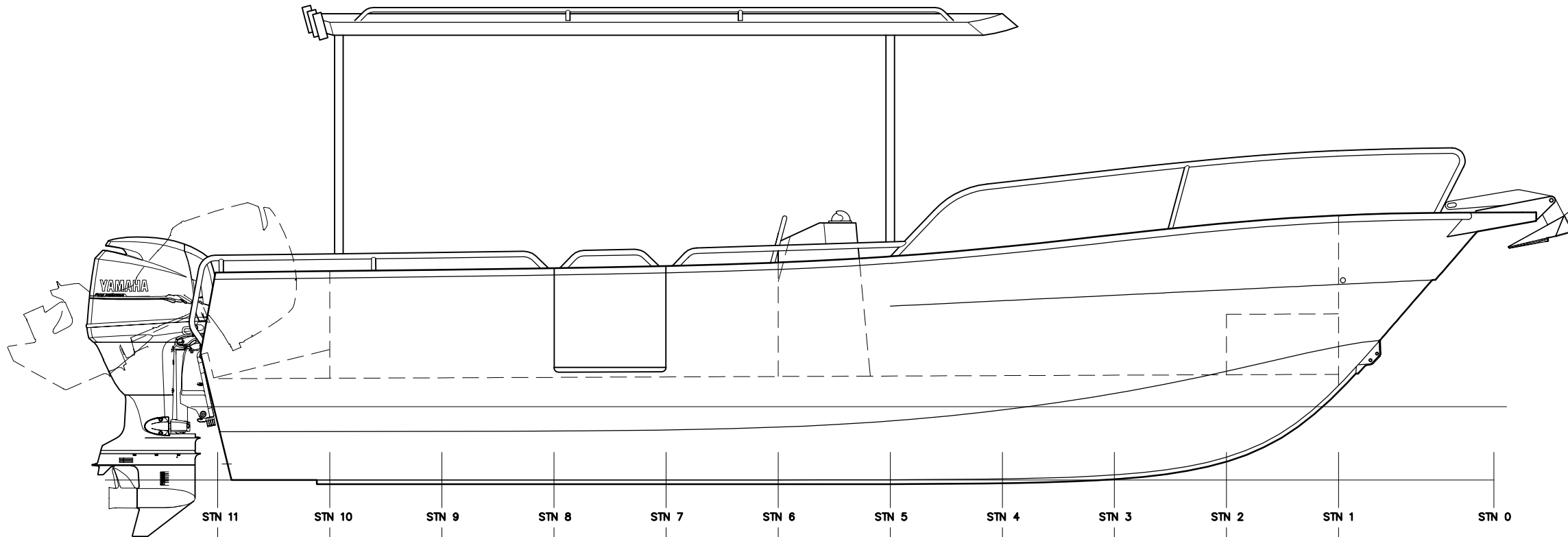


PRINCIPAL PARTICULARS

LDA: 7.75m
 LDH: 7.5m (Hull Only)
 BEAM: 2.45m (Plus Beltings)
 DRAFT: 0.40m (HULL)
 DISPL: 3200kg ON DWL
 ENG: 2x 115-150HP
 FUEL: 2x200 LITRES

DAMAGE STABILITY NOTES

1. BUILDER TO FIT 2 OF 4.0kL/H MANUAL BILGE PUMPS
2. BUILDER TO FIT SUFFICIENT FOAM TO COMPLY WITH BASIC FLOATATION STANDARDS. VOLUME TO BE CONFIRMED AFTER WEIGHING COMPLETED VESSEL



FUEL SYSTEM NOTES.

1. FUEL FILLER AND VENT PIPES TO RISE CONTINUOUSLY BETWEEN TANK TOP AND FILLER/VENT
2. TOTAL FLEXIBLE HOSE LENGTH FOR VENT AND FILLER TO BE LESS THAN 760mm EACH
3. TANK AND HULL STRUCTURE TO BE ISOLATED FROM ST. STEEL BOLTS WITH NYLON SLEAVES AND WASHERS.
4. FLEXIBLE HOSES TO BE FASTENED WITH TWO (2) CORROSION RESISTANT CLIPS AT EACH END
5. SHUT OFF COCK TO BE FITTED IMMEDIATELY AFTER SUPPLY EXIT FROM TANK.
6. FLEXIBLE FUEL SUPPLY HOSE TO BE ST. STEEL REINFORCED

CHRIS TUCKER MARINE DESIGN PTY LTD.
 PO BOX 194, OLINDA, VICTORIA, 3788, AUSTRALIA
 PHONE +61 (0)3 9728 1754, INFO@CTMD.COM.AU

7.5m TENDER

GENERAL ARRANGEMENT

| | | | |
|----|---------|-----------|-------|
| BY | DATE | SCALE | DRWG |
| CT | NOV '11 | 1:15 @ A1 | 111/4 |

THIS DRAWING MAY NOT BE COPIED, COMMUNICATED TO ANY PERSON OR USED FOR MANUFACTURE WITHOUT THE EXPRESS WRITTEN CONSENT OF THE DESIGNER.