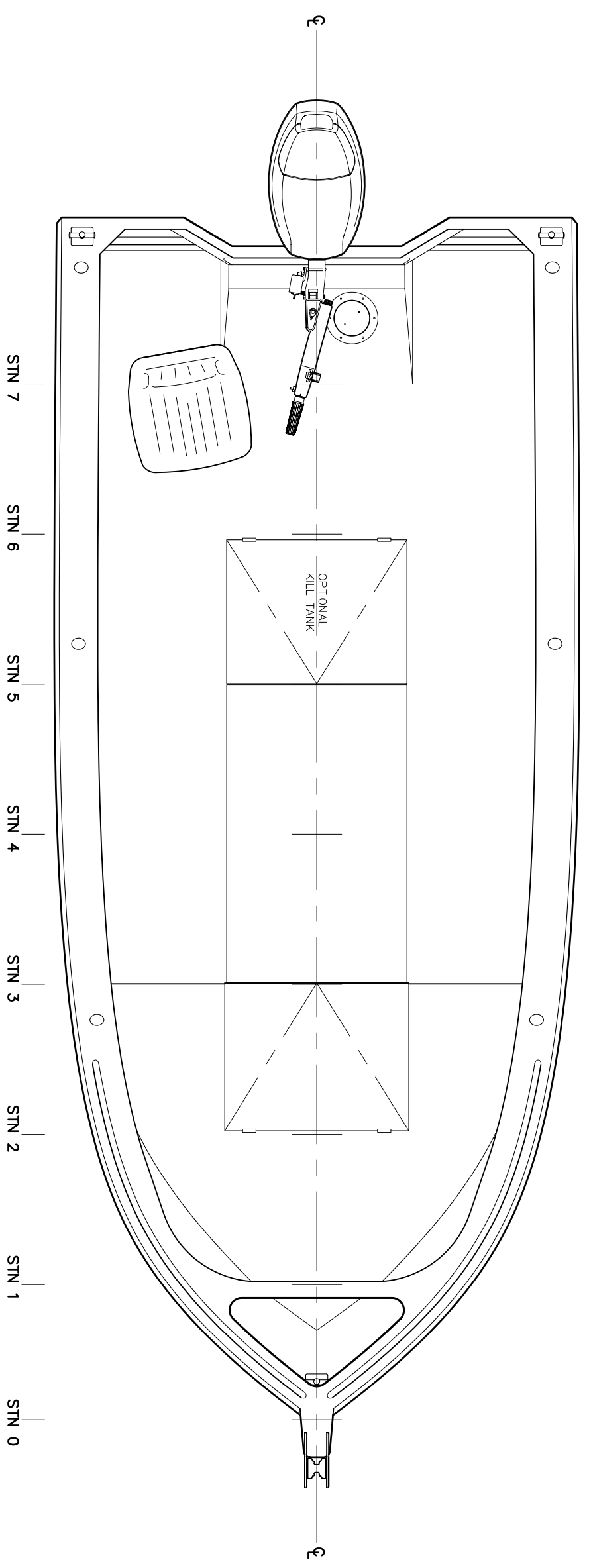
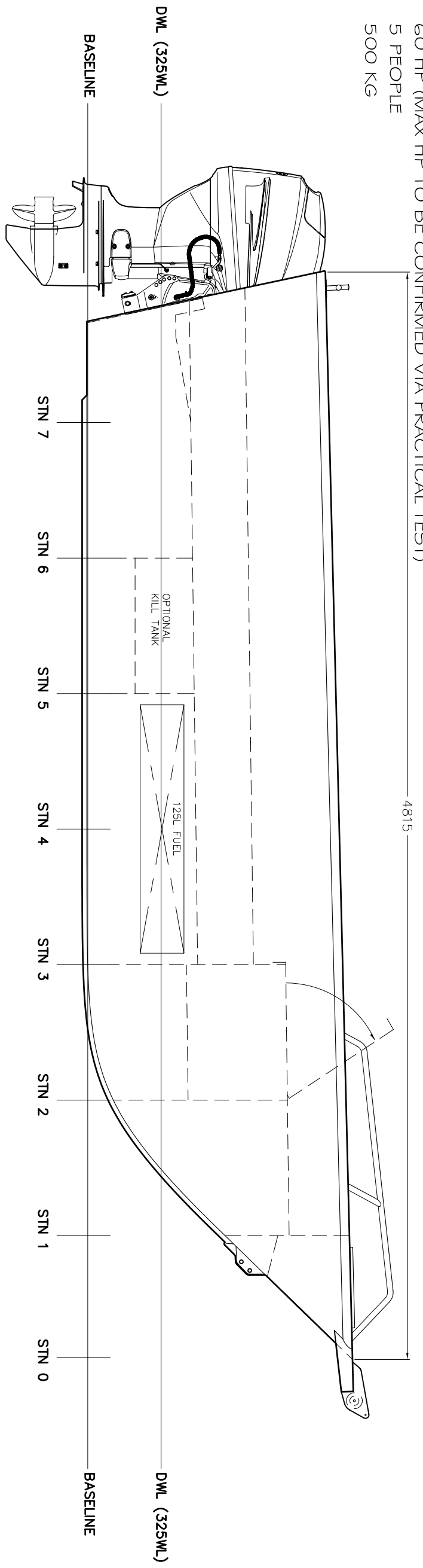


PRINCIPAL PARTICULARS

- LOA: 4.8m
- BEAM: 2.1m (WITH BELTINGS)
- DRAFT: 0.325m (HULL)
- DISPL: 1120kg (ON DWL)
- WEIGHT: 640kg
- TANKAGE: 175
- ENGINE: 60 HP (MAX HP TO BE CONFIRMED VIA PRACTICAL TEST)
- CAPACITY: 5 PEOPLE
- 500 KG



CHRIS TUCKER MARINE DESIGN PTY LTD.
 PO BOX 194, OLINDA, VICTORIA, 3788, AUSTRALIA
 PHONE +61 (0)3 9728 1754, INFO@CTMD.COM.AU

4.8m TILLER STEER

GENERAL ARRANGEMENT

BY	DATE	SCALE	DRAWG
CT	MAR 11	1:10 @ A1	97-11A

THIS DRAWING MAY NOT BE COPIED, COMMUNICATED TO ANY PERSON OR USED FOR MANUFACTURE WITHOUT THE EXPRESS WRITTEN CONSENT OF THE DESIGNER.