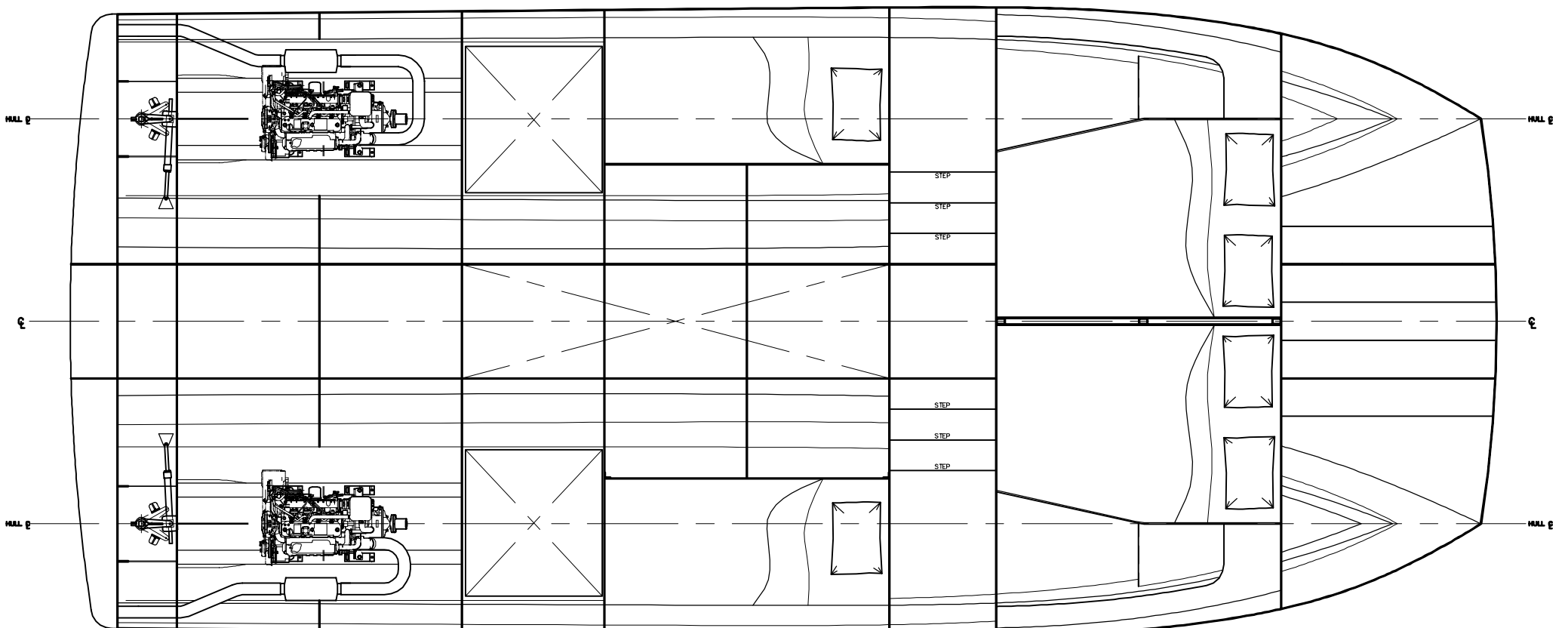
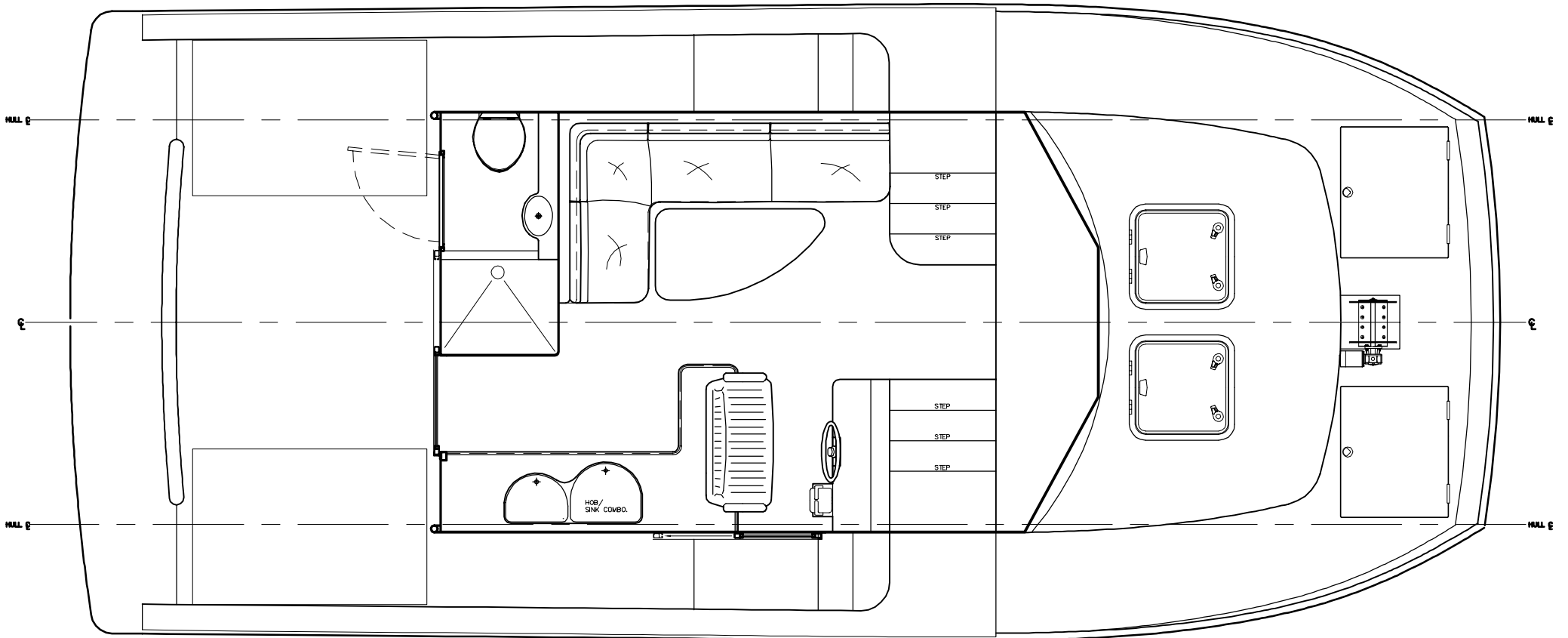
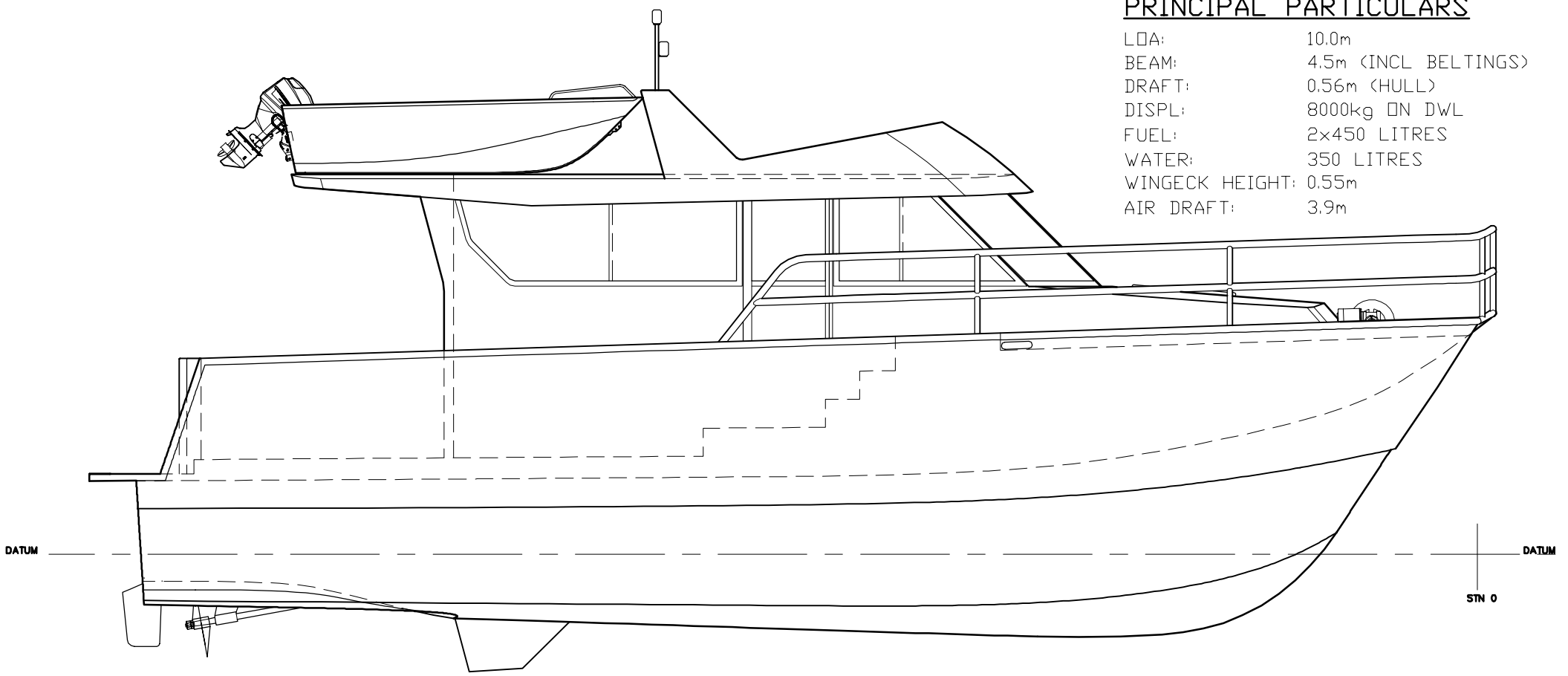


PRINCIPAL PARTICULARS

LOA: 10.0m
 BEAM: 4.5m (INCL BELTINGS)
 DRAFT: 0.56m (HULL)
 DISPL: 8000kg ON DWL
 FUEL: 2x450 LITRES
 WATER: 350 LITRES
 WINGECK HEIGHT: 0.55m
 AIR DRAFT: 3.9m



CHRIS TUCKER MARINE DESIGN PTY LTD.
 PO BOX 194, OLINDA, VICTORIA, 3788, AUSTRALIA
 PHONE +61 (0)3 9728 1754, INFO@CTMD.COM.AU

10.0m POWER CAT

PRELIMINARY

BY DATE SCALE DRWG
 CT OCT '12 1:20 @ A1 PR

THIS DRAWING MAY NOT BE COPIED, COMMUNICATED TO ANY PERSON OR USED FOR MANUFACTURE WITHOUT THE EXPRESS WRITTEN CONSENT OF THE DESIGNER.